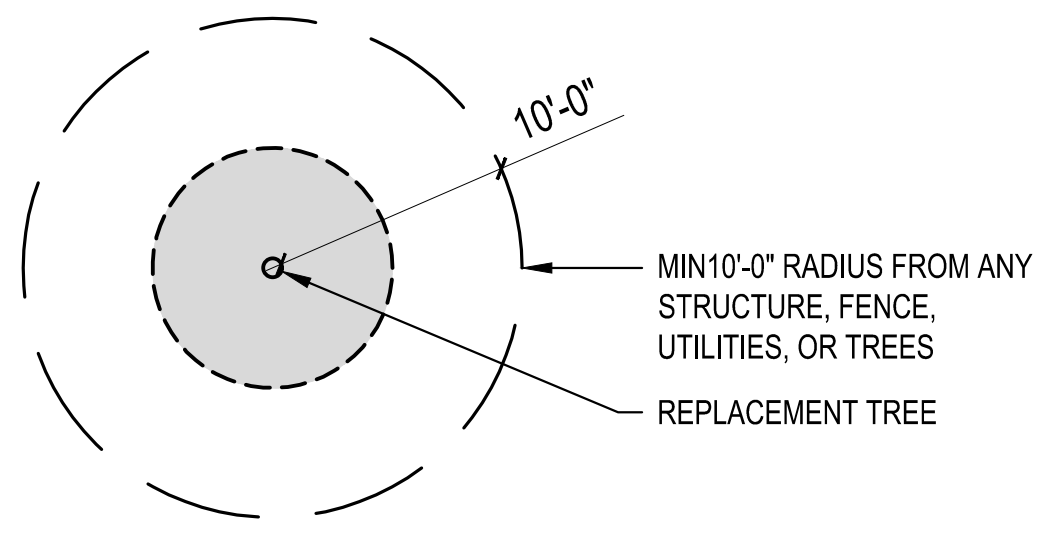


PLAN NOTES

REPLACEMENT TREE



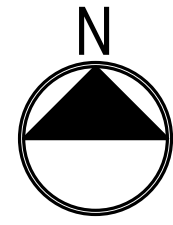
TREES 2, 22, AND 23 ARE PROPOSED TO BE REMOVED.

TREES 2 AND 23 HAVE A DBH OF 10-24". 2 REPLACEMENT TREES REQUIRED PER TREE
 TREE 22 HAS A DBH OF LESS THAN 10". 1 REPLACEMENT TREE IS REQUIRED PER TREE

A TOTAL OF 5 REPLACEMENT TREES ARE REQUIRED. 5 TREES WILL BE PROVIDED

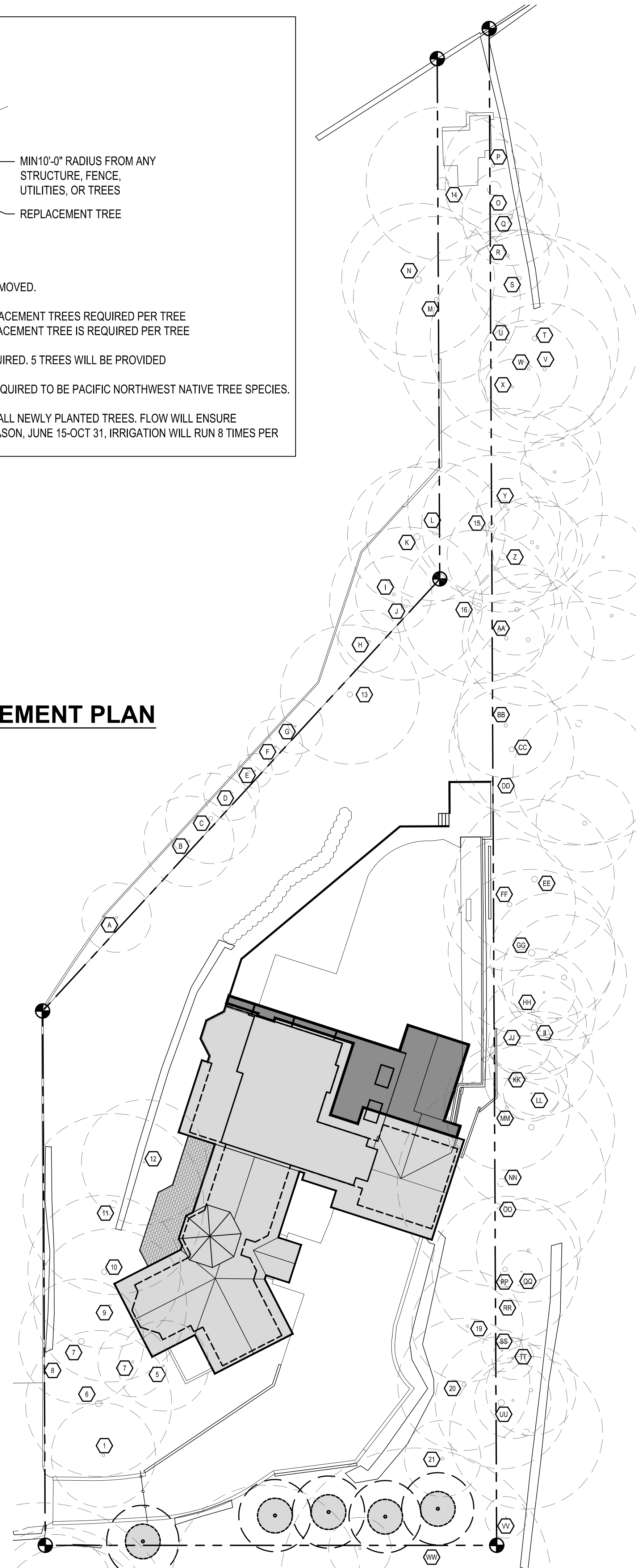
HALF (3) OF THE REPLACEMENT TREES ARE REQUIRED TO BE PACIFIC NORTHWEST NATIVE TREE SPECIES.

DRIP IRRIGATION WILL BE PROVIDED AROUND ALL NEWLY PLANTED TREES. FLOW WILL ENSURE SATURATION OF ROOT ZONE. DURING DRY SEASON, JUNE 15-OCT 31, IRRIGATION WILL RUN 8 TIMES PER MONTH



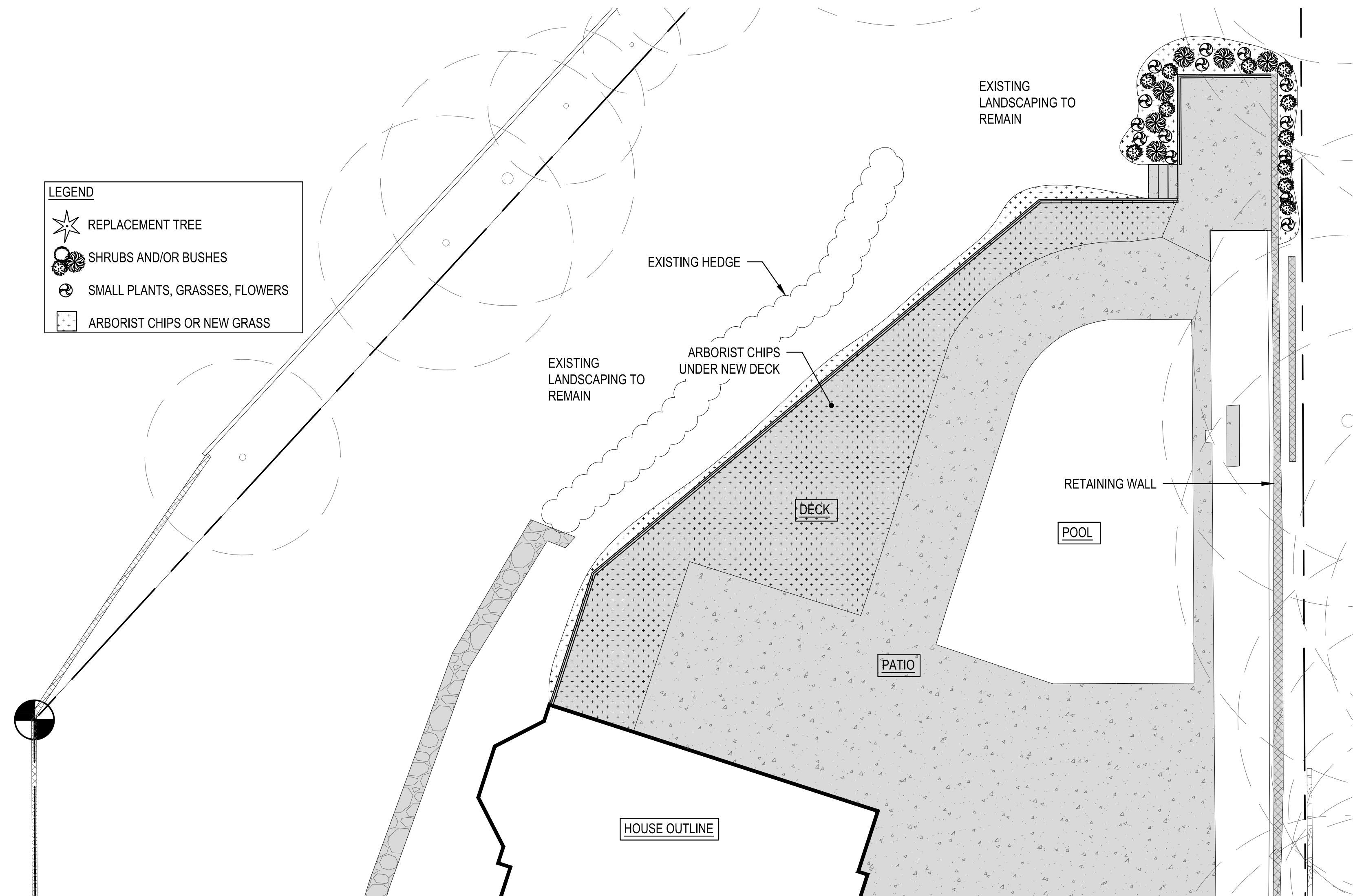
TREE REPLACEMENT PLAN

SCALE: 1" = 20'-0"



LEGEND

- REPLACEMENT TREE
- SHRUBS AND/OR BUSHES
- SMALL PLANTS, GRASSES, FLOWERS
- ARBORIST CHIPS OR NEW GRASS



DECK/PATIO AREA PARTIAL LANDSCAPE PLAN

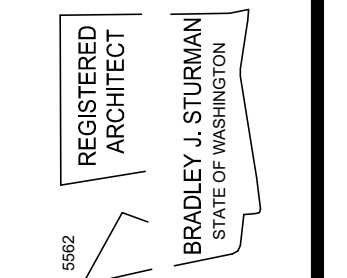
SCALE: 1/8" = 1'-0"



DRIVEWAY AREA PARTIAL LANDSCAPE PLAN

SCALE: 1/8" = 1'-0"

SCALE: IF SHEET IS LESS THAN 24" x 36" IT IS A REDUCED PRINT, REDUCE SCALE ACCORDINGLY



www.sturmanarchitects.com
 All Rights Reserved
 © 2025

**TREE REPLACEMENT PLAN
 LANDSCAPE PLAN**

REVISIONS:	
	CORRECTION 1 2025-6-3
PLOT DATE:	7/2/2025
DRAWN BY:	JM
CHECKED BY:	BJS
SHEET	